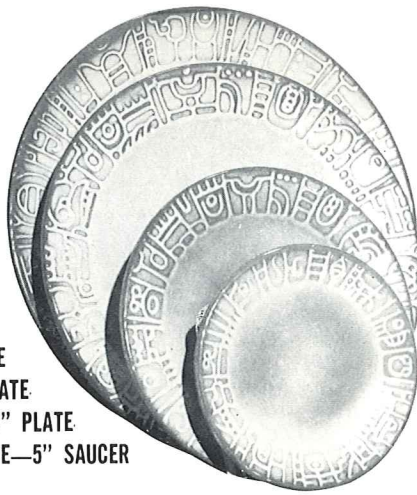




7V—2 QT. BAKER/BEAN POT 8.50  
7V/W—BAKER & WARMER, SET 15.00



5.00 7FL—10" PLATE  
3.50 7F—9" PLATE  
3.00 7G—7" PLATE  
2.50 7E—5" SAUCER



7D—2 QT. PITCHER 8.50



7W—3 QT. BAKER/BEAN POT 12.00  
7W/W—BAKER & WARMER, SET 18.50



7B—SUGAR WITH LID 4.50



7A—6 OZ. CREAMER 3.00

7AB—CREAM & SUGAR SET 7.00



7C—CUP 3.00



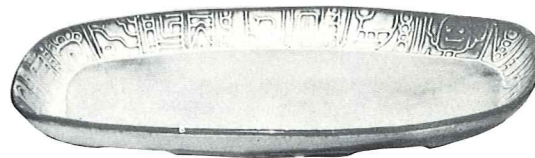
\*C4—12 OZ. COFFEE MUG 3.00



7M—14 OZ. MUG 4.00



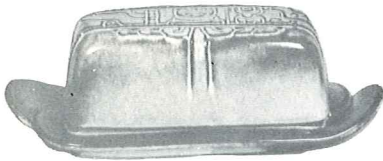
7H—SALT & PEPPER 4.25



7QS—13" STEAK PLATTER (SHALLOW PLATTER) 4.50



7XO—8 OZ. FRUIT 2.50



7K—BUTTER DISH 6.00



7Q—13" DEEP PLATTER 7.00



\*243—BONE DISH 6 1/2" 2.50



7X—14 OZ. CHILI-SOUP 3.00



7PS—9" TRAY 3.50



\*244—INDIVIDUAL VEGETABLE BOWL 2.50



7XL—20 OZ. SALAD 3.50



7J—2 CUP TEAPOT 6.00



7FC—15" CHOP PLATE 20.00



7N—1 QT. VEGETABLE BOWL 4.25



7T—6 CUP TEAPOT 8.50



7TP—17" AZTEC OVAL PLATTER 15.00



\*242 CORN DISH 2.50

THIS PAGE AVAILABLE IN PRAIRIE GREEN, DESERT GOLD, AND WHITE SAND.

SIZES ARE APPROXIMATE AND MAY VARY SLIGHTLY.

\*AVAILABLE IN ALL COLORS (NO TERRA COTTA)